



Venues



Marquee Theatre - Deck 5 & 6

Seating Capacity – 840 over 2 decks

Venue Type: Closed venue

Formal Rows / Theatre Style:

Freestyle seating: Not applicable

Other: *As per current layout only all seating is fixed to face the stage*

Formal, Seated Dining Buffet and or Table Waiter Service : Not applicable

Casual Eating Assisted or Self-Service Buffet Fork Food

Canapés Waiter Service

Full Bar Service including Tea and Coffee

Tea and Coffee Service only

Shows in Theatre :

- Balle Balle Show
- Indian Cinemagic
- Magic Show
- Romance in Bollywood
- Burlesque Show

Event Type:

- Large conferences, meetings, and receptions.

Availability:

- Please check the Venue Matrix

Marque Theatre



Connexions & Promenade - Deck 6

Seating Capacity –

280 max – Inside Venue

60 max - Promenade

Venue Type: Closed venue

Formal Rows / Theatre Style: Not Applicable

Freestyle seating:

Other: **Fixed furniture**

Formal, Seated Dining Buffet and or Table Waiter Service:
Not Applicable

Casual Eating Assisted or Self-Service Buffet Fork Food

Canapés Waiter Service

Full Bar Service including Tea and Coffee

Tea and Coffee Service only

Availability:

- Please check the Venue Matrix

Venue Highlights:

- Popular bar & entertainment venue with a large feature bar and dance floor .
- There is a takeaway coffee shop in the entrance to this area that will remain open to all guests at an additional cost
- Various shapes and sizes of sofas, Dance floor, a stage with fixed piano.

Event Type:

- Casual meetings or Receptions / Parties

Shows in Connexions:

- Magic Show
- Entertainment Activities

Connexions





Dome- Deck 10

Seating Capacity – 110 max

Venue Type: Open venue with access restricted

Formal Rows / Theatre Style: Not Applicable

Freestyle seating: Not Applicable

Other: **Limited movement of furniture**

Formal, Seated Dining Buffet and or Table Waiter Service: Not Applicable

Casual Eating Assisted or Self-Service Buffet Fork Food: **Not Applicable**

Canapés Waiter Service: **Dry Snacks**

Full Bar Service including Tea and Coffee

Tea and Coffee Service only

Venue Highlights:

Excellent views of the ocean from the top of the ship. Large social space for private parties & Meetings

NOTE – Open space to deck above for the Gym and Spa – This space will be open to the public

Event Type:

- Casual meetings or Receptions / Parties

Availability:

- Please check the Venue Matrix

Shows in Dome:

- Entertainment Activities

Dome



Pool Deck - Deck 10

Seating Capacity – 200 - 400 max

Venue Type: Open venue with access restricted

Formal Rows / Theatre Style: Not Applicable

Freestyle seating:

Formal, Seated Dining Buffet and or Table Waiter Service: Not Applicable

Casual Eating Assisted or Self-Service Buffet Fork Food:

Canapés Waiter Service:

Full Bar Service including Tea and Coffee:

Tea and Coffee Service only:

Availability:

- Please check the Venue Matrix

Venue Highlights:

Excellent views of the ocean from the top of the ship. Large social space for private parties & Meetings

NOTE – Open space to deck above for the Gym, Pool and Spa – This space will be open to the public

They Blocked space for groups will be corden-off area.

Event Type:

- Exhibitions
- Receptions / Parties in an allocated area on the open deck
- Weather permitting

Shows in Dome:

- Entertainment Activities
- Sail away Party

Pool Deck





Restaurants



Starlight- Deck 4 & 5

Seating Capacity – 412 Max (Deck 4)

Seating Capacity – 292 Max (Deck 5)

Proposed Opening Hours:

- Breakfast – 0800 to 1000 (flexible to suit location requirements)
- Lunch – 1300 to 1500
- Dinner – 2000 - 2200

(Bar opens at same times)

Notes-

- Alcohol is not served when the cruise is docked at the port
- Alcohol is served after 12 Nautical Miles
- Starlight Deck 5 serves exclusively for Jain & vegetarian Buffet only*
- Starlight Deck 4 serves Non- Vegetarian & Vegetarian Buffet*

Product Information:

- Included in the ticket price with potential upsell opportunities
- Main Dining Room open for breakfast, lunch, and dinner
- Full Bar service with Wine Cellar

Formal Rows / Theatre Style: Not Applicable

Freestyle seating

All tables are fixed & cannot be moved, Separate meeting tables

Formal, Seated Dining Buffet and or Table Waiter Service

Casual Eating Assisted or Self-Service Buffet Fork Food

Canapés Waiter Service

Full Bar Service including Tea and Coffee

Tea and Coffee Service only



Food Court - Deck 10

Seating Capacity – 563

Inside – 443 & Outside - 120

Proposed Opening Hours:

- Breakfast – 0730 to 1030
- Lunch – 1230 to 1530
- Hi Tea- 1630 to 1800 (Tea & Cookies)
- Dinner – 1930 – 2230
- Mid night snacks – 0030 – 0130 (2 snacks)

Notes-

- Alcohol is not served when the cruise is docked at the port
- Alcohol is served after 12 Nautical Miles

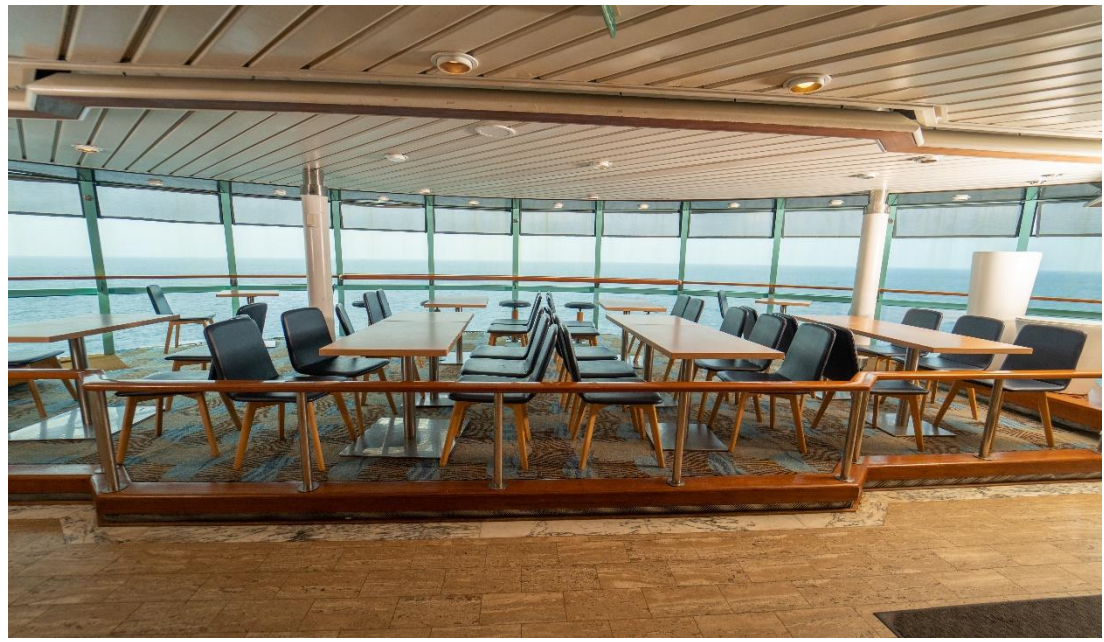
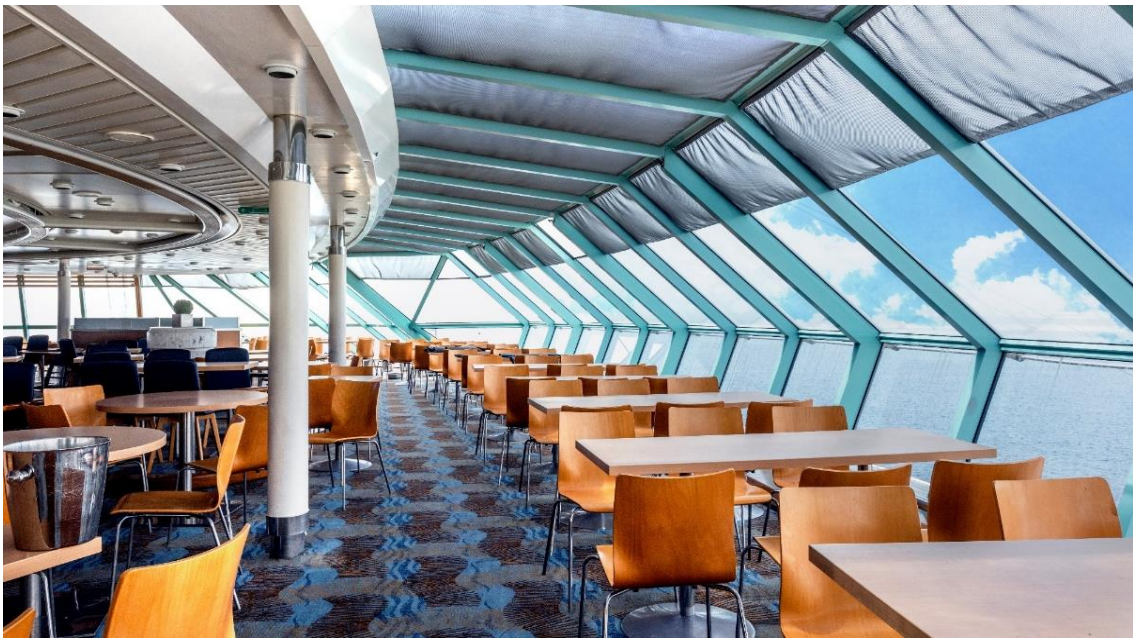
Product Information:

- All assisted service / beverage stations
- Offers a variety of menu, featuring VEG / Non -VEG / Jain dishes
- Counters change through the day
- Waiting staff for clearance of tables & assisting guests

What the guest can expect:

- Bar for purchased drinks
- Fresh orange juice for breakfast service
- Offering handmade cutting chai / Masala Chai
- Ice cream softy at a charge

Food Court





Chopstix- Deck 5

Seating Capacity – 74

Proposed Opening Hours:

- Dinner – 2000 - 2230

Product Information:

- Formal Rows / Theatre Style:
- Freestyle seating:
- Casual Eating Assisted or Self-Service Buffet Fork Food:
- Canapés Waiter Service:
- Full Bar Service including Tea and Coffee:
- Tea and Coffee Service only:

Venue Highlights

Our premium exclusive Dining venue with floor to ceiling windows for great sea views and easy access the all-other areas of the ship

Price:

Ala Carte Restaurant

Chopstix





Chopstix- Chef Table

Seating Capacity – Minimum 6 – Maximum 8

Proposed Opening Hours:

- Dinner – 2000 – 2230 (Flexible as per guest)

Product Information:

- Separate area within the exclusive dining venue
- Special menu that can be adapted to the individual guest needs with interactive chef's to enhance your dining experience.
- A perfect place to celebrate & hot lunch/dinner for families & friends.

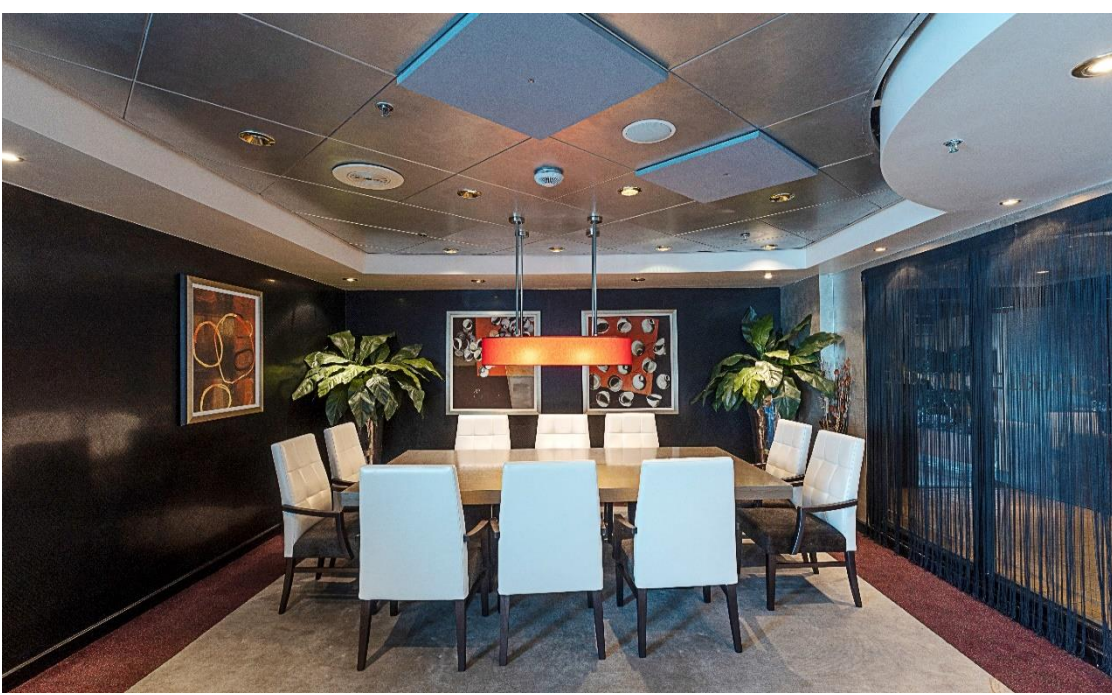
Price:

- USD 30 per person for 3-Course Meal
- USD 40 per person for 5-Course Meal
- 15% Service tax + 5% GST applicable additional

Menu Grid

- 1 Appetizer
- 1 Main
- 1 Salad
- Condiments (Raita, Pickle)
- 1 Dal
- Assorted Indian Breads
- 1 Starch (Rice)
- Dessert

Chef Table





Thank You
Happy Sailing