

 Resorts World Cruises



DUAL HOMEPORT FROM
MALAYSIA & SINGAPORE

Genting Dream

A Resort Cruising At Sea

A Resort Cruising At Sea



What a day on the Genting Dream looks like...

The long and short of the Genting Dream

At 335m end to end, we're bigger than a skyscraper and way more fun.



Take a virtual 360° tour

Gross Tonnage **150,695 tons**
 Length **335m**
 Width **40m**
 Decks **18**
 Passenger Capacity **3,352 (Lower Berth)**
 Staterooms **1,674**
 Manufacturer **Meyer Werft, Germany**



1 Rope Course & Zipline

Feel the thrill of gliding above the ocean on a 35-metre zipline.



2 Waterslide Park

Get drenched in fun on one of our six different waterslides.



3 Zouk & Zouk Beach Club

There's a party going on somewhere! Dive in at one of our famous pool parties or dance till dawn with our guest DJs at Zouk.



4 The Palace

An exclusive all-suite, all-inclusive enclave with private facilities and European-style butlers. It is a ship-within-a-ship boutique hotel for connoisseurs of true luxury and hospitality.



5 The Lido

Our buffet-style restaurant with a smorgasbord of international and halal cuisine including vegetarian and non-vegetarian Indian dishes.



6 Bar City

Sit back and enjoy world-renowned vintages, premium Scotch whiskies, cocktails or bubbly while we entertain you with performances and live bands.



7 Crystal Life Spa

Rejuvenate your mind, body and spirit in our Asian and Western-style spas. You can also enjoy a selection of healthy meals and beverages here.



8 The Boutiques

Spurge on International luxury brands at our boutiques or outlet store.



9 Little Dreamers Club

Leave the kids with us while you explore the ship. They'll love our exciting line up of activities and classes. For kids aged 2 to 12.



10 Zodiac Theatre

Enjoy live production shows from our acclaimed entertainment team.



PALACE VILLA Approx. 224 sq.m | Max Occupancy 6 | Deck 17 | 1 King-size Bed + 1 Queen-size Bed + 1 Double Sofa Bed

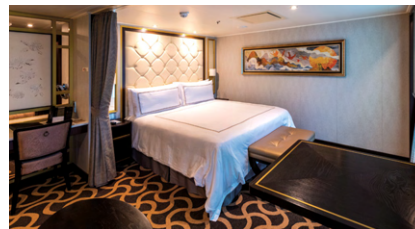


PALACE PENTHOUSE Approx 56 - 115.4 sq.m | Max Occupancy 4 - 6* | Deck 13 / 16 | 1 King-size Bed + 1 Double Sofa Bed / 1 Queen-size Bed + 2 Double Sofa Beds / 1 Queen-size Bed + 1 Double Sofa Bed



PALACE DELUXE PREMIUM

From 41 - 61 sq.m
Max Occupancy 4
Deck 9 / 10 / 11 / 12 / 13 / 15
1 King-size Bed + 1 Double Sofa Bed



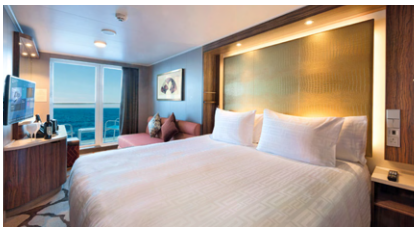
PALACE DELUXE SUITE

From 41 sq.m
Max Occupancy 4
Deck 15
1 Queen-size Bed + 1 Double Sofa Bed



PALACE SUITE

From 37 - 40 sq.m
Max Occupancy 4
Deck 13 / 15 / 16 / 17
1 Queen-size Bed + 1 Double Sofa Bed



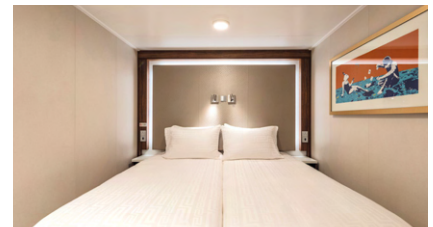
BALCONY / BALCONY DELUXE STATEROOM

From 20 sq.m / From 22 - 28 sq.m
Max Occupancy 3 - 4 / 2 - 4
Deck 8 / 9 / 10 / 11 / 12 / 13 / 15
1 Queen-size Bed + 1 Single Sofa Bed / 1 Single Sofa Bed + 1 Ceiling Pullman Bed / 1 Double Sofa Bed



OCEANVIEW STATEROOM

From 16 - 35 sq.m
Max Occupancy 2 - 4
Deck 5 / 9 / 10 / 11 / 12 / 13
2 Single Beds / 2 Single Beds + 1 Single Sofa Bed / 2 Single Beds + 1 Single Sofa Bed + 1 Ceiling Pullman Bed



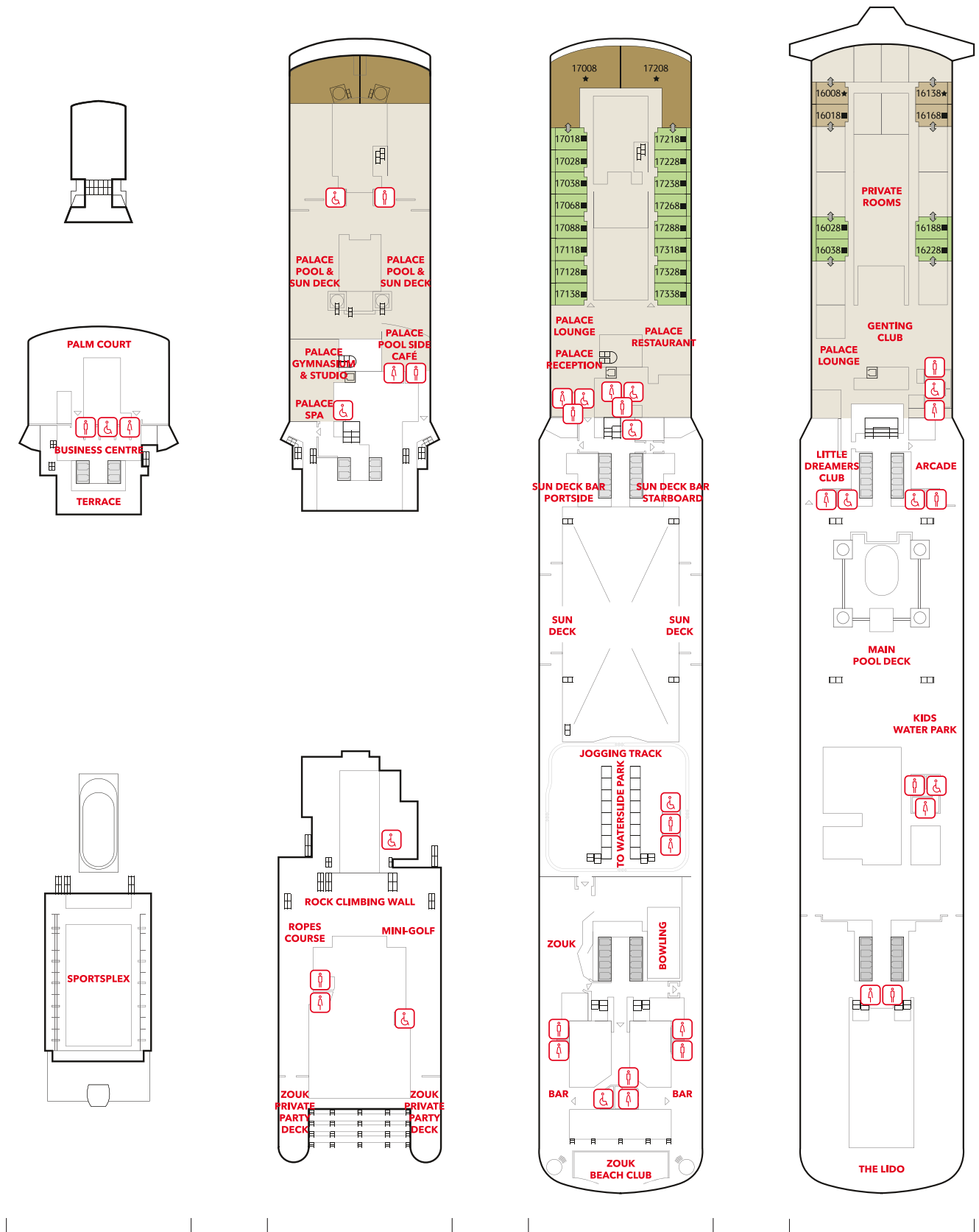
INTERIOR STATEROOM

From 13 - 14 sq.m
Max Occupancy 2 - 4^
Deck 5 / 8 / 9 / 10 / 11 / 12 / 13 / 15
2 Single Beds / 2 Single Beds + 1 Ceiling Pullman bed / 1 Single Bed + 1 Pullman Bed + Double Sofa Bed

* The maximum occupancy of designated Palace Penthouses can be up to 6 guests upon request, subject to stateroom availability.

^ The above image is for a stateroom configuration for 2 persons - other stateroom configurations for 3 persons and 4 persons are also available.

Genting Dream Deck Plans



DECK 19

Lounge, Business Centre & SportsPlex

DECK 18

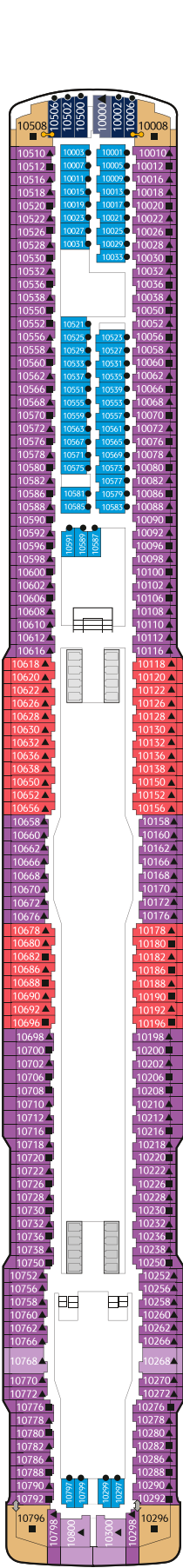
The Palace, Ropes Course, Mini-Golf, Rock Climbing Wall & Zouk Private Party Deck

DECK 17

The Palace, Suites, Zouk & Zouk Beach Club

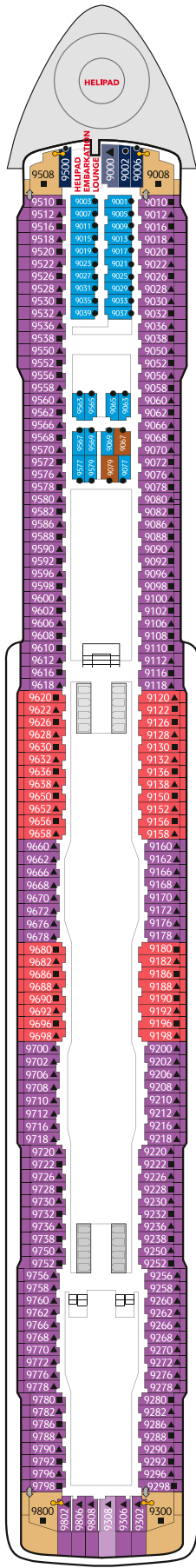
DECK 16

Genting Club, Suites, Entertainment Venues, Water Activities & Restaurant



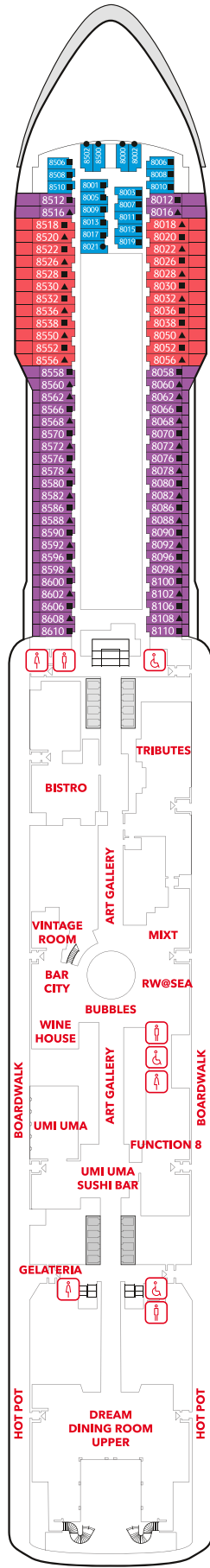
DECK 10

Suites, Balcony Deluxe, Balcony, Oceanview & Interior Staterooms



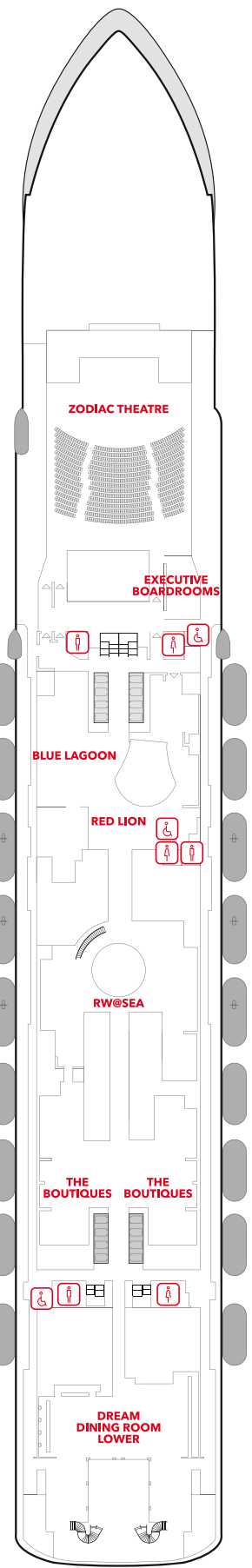
DECK 9

Suites, Balcony Deluxe, Balcony, Oceanview & Interior Staterooms, Helipad



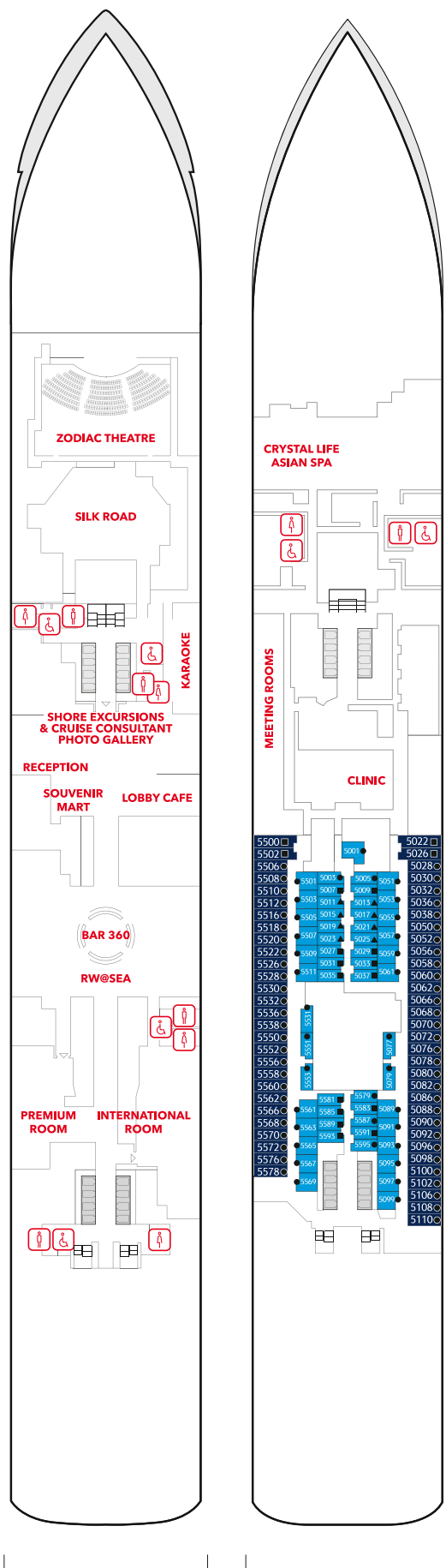
DECK 8

Restaurants, Bars, Lounges & Multi-purpose Venue, Balcony & Interior Staterooms



DECK 7

Main Theatre, Executive Boardrooms, Restaurants, Retail Venues & Entertainment Venues



DECK 6

Main Lobby, Reception, Restaurant, Café, Lounges & Entertainment Venues

DECK 5

Asian Spa, Oceanview & Interior Staterooms

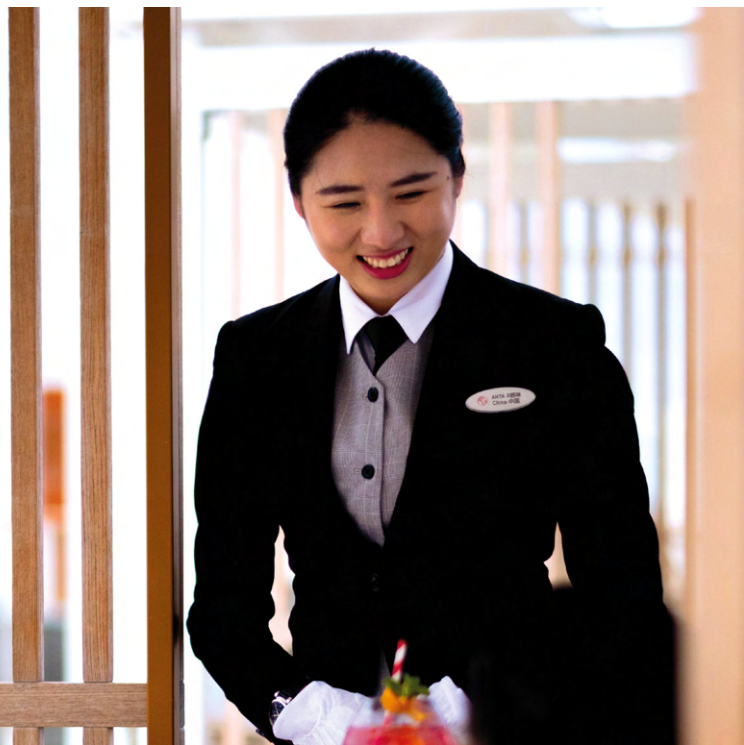
Restaurants & Bars	DECK	Teenagers & Children	DECK
Palm Court	19	Little Dreamers Club	16
Sun Deck Bar	17	Arcade	16, 6
The Lido*^	16		
Pool Deck Bar	16		
Crystal Life Cuisine	15		
Dream Dining Room Upper*	8		
Hot Pot	8		
Umi Uma	8		
Bistro	8		
Gelateria	8		
Bar City	8		
Dream Dining Room Lower*	7		
Blue Lagoon	7		
Red Lion	7		
Bar 360	6		
Lobby Cafe	6		
Silk Road	6		
The Palace	DECK	Sports & Recreation	DECK
Palace Pool Side Café	18	Waterslide Park	19
Palace Pool & Sun Deck	18	SportsPlex	19
Palace Gymnasium & Studio	18	Mini-Golf	18
Palace Spa	18	Rock Climbing Wall	18
Palace Restaurant	17	Ropes Course	18
Palace Lounge	17	Sun Deck	17
Palace Reception	17	Joggin Track	17
		Main Pool Deck	16
		Kids Water Park	16
		Boardwalk	8
Entertainment	DECK	Genting Club	DECK
Zouk Private Party Deck	18	Club	16
Zouk Beach Club	17	Lounge	16
Zouk	17		
RW@Sea	8,7,6		
Zodiac Theatre	7		
Karaoke	6		
International Room	6		
Premium Room	6		
Other Services	DECK		
		Business Center	19
		Bridge Viewing Room	15
		Helipad Embarkation Lounge	9
		Function 8 (Multi-purpose Venue)	8
		Tributes	8
		Executive Boardrooms	7
		Reception	6
		Shore Excursions	6
		Cruise Consultant	6
		Clinic	5
		Meeting Rooms	5

*Inclusive Restaurant ^Halal Options Available

Categories

- Palace Villa
- Balcony Stateroom
- Palace Penthouse
- Balcony Stateroom (Accessible)
- Palace Deluxe Premium
- Oceanview Stateroom
- Palace Deluxe Suite
- Oceanview Stateroom (Accessible)
- Palace Suite
- Interior Stateroom
- Palace Suite (Accessible)
- Interior Stateroom (Accessible)
- Balcony Deluxe Stateroom

- Up to two persons occupancy
- ▲ Up to three persons occupancy
- Up to four persons occupancy
- ★ Up to six persons occupancy
- † Connecting Stateroom
- Adjoining Stateroom



THE PALACE

A Brand New Elevated Experience

The Palace is our all-suite concept within Genting Dream, your private club on board - the largest luxury ship-within-a-ship enclave found on any cruise liner. For connoisseurs of true Asian luxury, hospitality and exuberant living.

All-Inclusive Privileges

- 1 All-Suite Accommodations
- 2 All-Butler Service
- 3 All-Indulgent Benefits
- 4 All-Encompassing Spaces

On your arrival

- Access to VIP lounge at terminal
- Priority check-in with butler assistance
- Fast track security clearance
- Priority luggage check-in and check-out with express delivery

In your suite

- 24-hour butler concierge service
- Standard Wi-Fi package throughout cruise
- Dream beds and luxurious Italian linens from Frette™
- Premium bath amenities
- Nespresso™ machine with gourmet coffee and tea
- Welcome minibar beverages and snacks
- Welcome beverages, fruit plate and snacks

When you dine

- Exclusive access to The Palace Restaurant
- Set meal entitlements at designated specialty dining restaurants
- Happy Hour with complimentary drinks such as selected wines, beers and non-alcoholic beverages at selected venues
- Free-flow of chilled juices, Chinese and Japanese teas, and coffee throughout the day at selected venues
- Priority booking for Chef's Table and Vintage Room

When you explore

- Priority access to live production shows
- Selected exclusive Kids Programme for children between 2 and 12 years of age

Privileges are subject to change without prior notice.

WEBSITE

www.rwcruises.com

HONG KONG ONLY

+852 800 938 887

EMAIL

reservations.en@rwcruises.com

MALAYSIA ONLY

1800814852



[resortsworldcruises](https://www.resortsworldcruises.com)

SINGAPORE & OTHER MARKETS

+65 800 852 8188